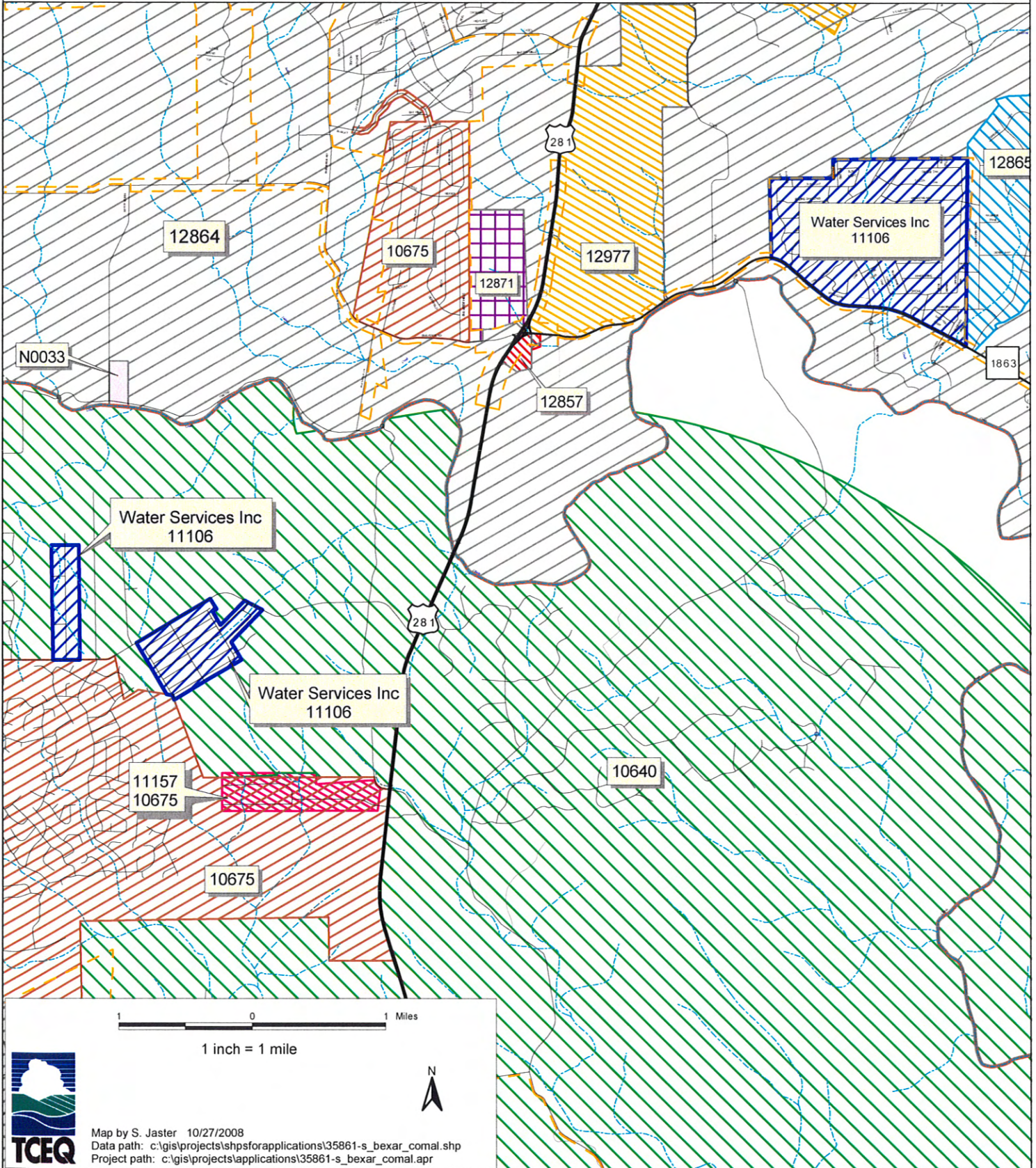


SWWC Utilities, Inc. dba Water Services, Inc.
Portion of Water Service Area in Bexar and Comal Counties
CCN No. 11106
Application No. 35861-S (Transferred CCN No. 11106 from Water Services, Inc.
in Bexar, Comal, Guadalupe and Kendall Counties)



Map by S. Jaster 10/27/2008
Data path: c:\gis\projects\shpsforapplications\35861-s_bexar_comal.shp
Project path: c:\gis\projects\applications\35861-s_bexar_comal.apr